

NORTH WEST DEPARTMENT OF AGRICULTURE AND RURAL DEVELOPMENT. AGRICULTURAL SUPPORT SERVICES.

BULL SELECT AND BREEDING 20 October 2021

**KHOMOTSO KGASWANE
ANIMAL SCIENCE DIVISON
018299-6798/072 266 4347
smashala@nwpg.gov.za**



**Agriculture &
Rural Development**
Department:
Agriculture and Rural Development
North West Provincial Government
REPUBLIC OF SOUTH AFRICA



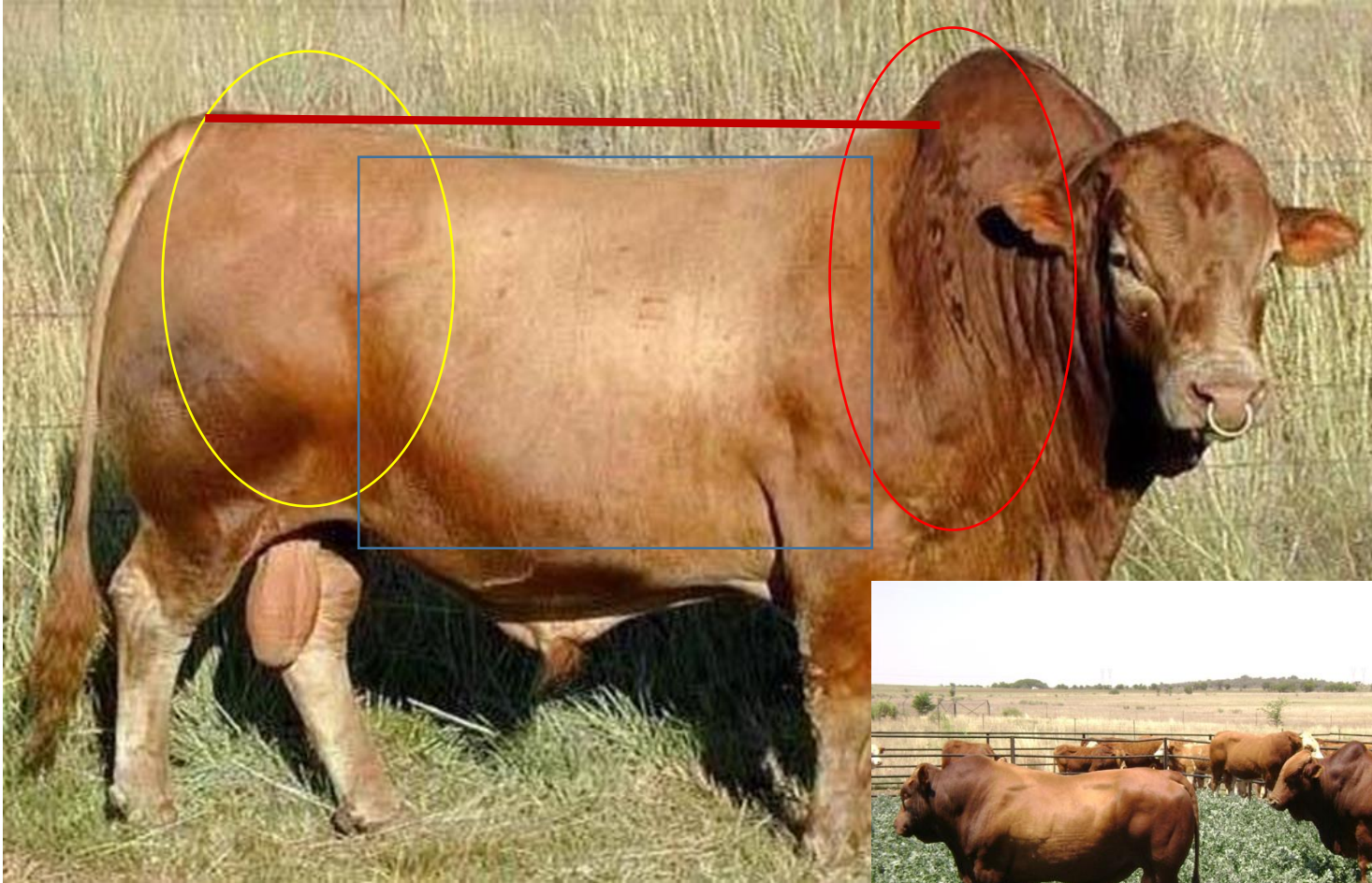
Bull selection



- When buying a bull consider what he is **worth** than the **cost**
- Know your cows or herd needs and your objective
- Inspect him thoroughly like when buying a car
- When inspecting start with the body, the interior , the engine then the wheel
- Then other tools will follow



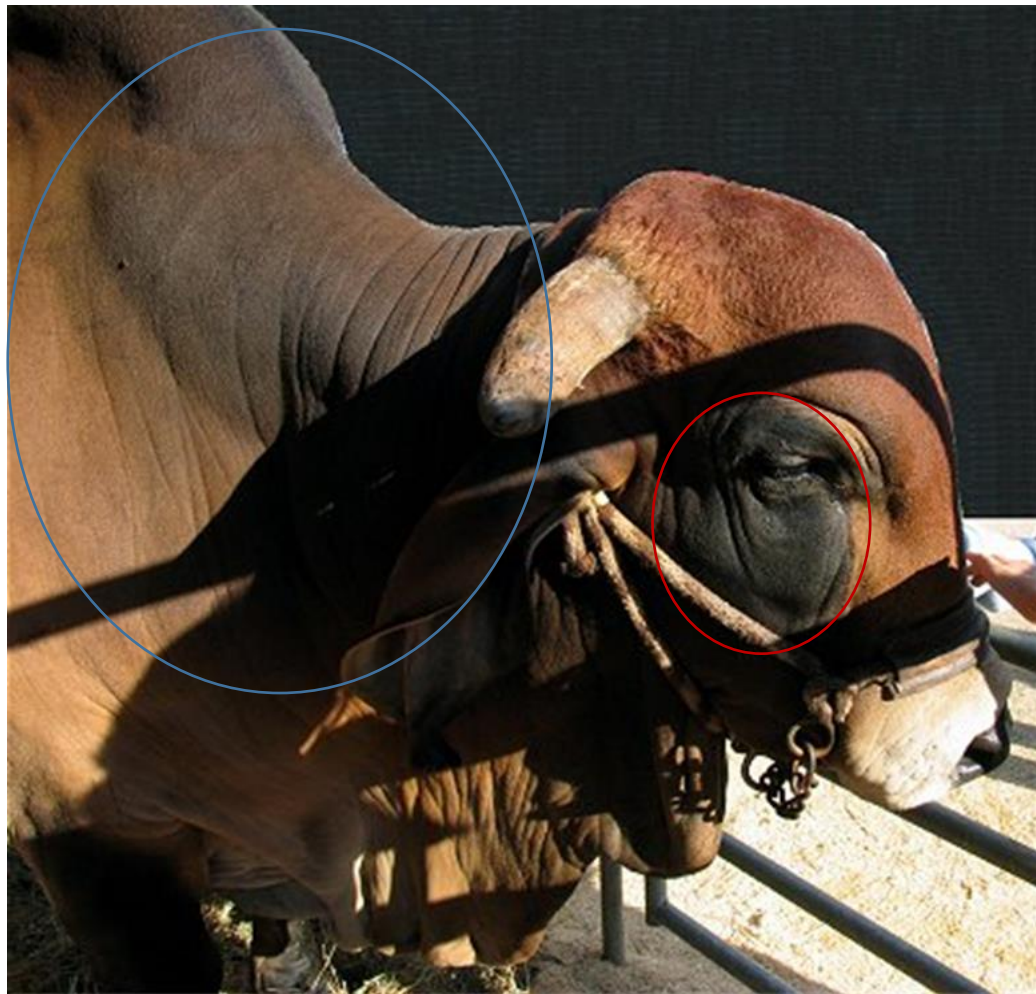
The body



- Does he look like a bull?
- Muscling
- Volume and depth
- Height and width



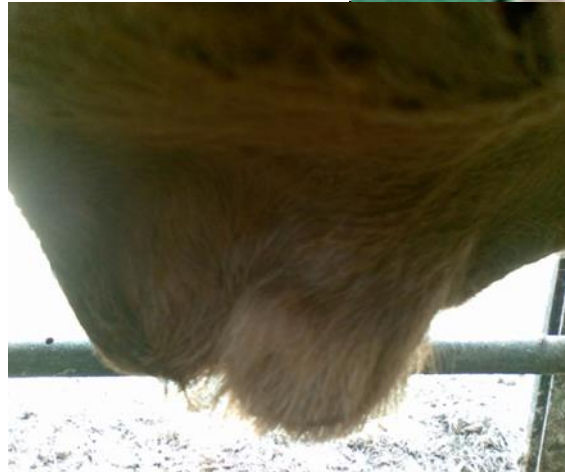
The head to the body



- The head should be well connected to the body
- The neck should be deep dark coloured – Bull fertility
- Face must show masculinity (strong and rough), no underjaw or skew face
- The eyes must be well covered for protection from the sun
- Eye pigmentation (must be darker), avoid albino like or red eyed bulls
- The mouth must not be skew and bigger to enable eating
- The nose must be darker



Engine and paddles



- The sheath must not be too small or too long
- The prepuce should not be folded or covered with fat
- not have lot of fat on the opening
- Easy to take out the penis



Engine and paddles



- The bigger the testicles the better, at least 32cm at 24 months of age
- Smaller testes are associated with poor semen quality & low fertility.
- Long scrotal neck tend to have more problems with injuries.
- Avoid Hypoplasia & Cryptorchids
- The cleavage should not be above 3cm deep



The wheels



Correct



Too straight



Sickle-hocked



Normal



Knock-kneed



Bow-legged



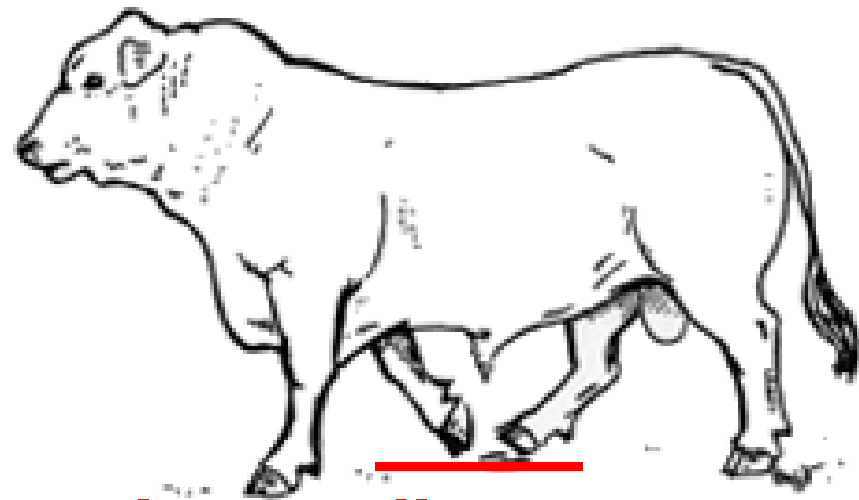
Correct



Bow-legged



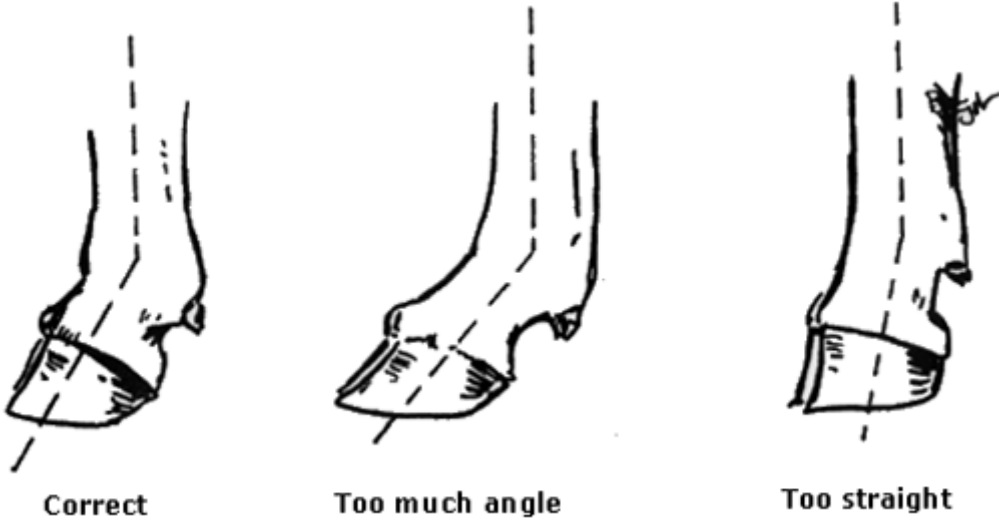
Cow-hocked



Tlhako ya morago e gata fa ya pele e gatileng teng.



The wheels



- **Avoid bulls with weak pasterns, over grown hooves, straight hocks**



Summary Bull selection



- An obese bull shows infertility
- Avoid bulls that show temperament
- The tail attachment
- Select bulls with economically related genetic information
- Replace bull regularly to maintain genetic progress

REMEMBER TO BUY A BULL FOR THE COWS...



**Agriculture &
Rural Development**
Department:
Agriculture and Rural Development
North West Provincial Government
REPUBLIC OF SOUTH AFRICA

BREEDING



What is breeding?

The mating (having sex) and production (making) of offspring



**Agriculture &
Rural Development**
Department:
Agriculture and Rural Development
North West Provincial Government
REPUBLIC OF SOUTH AFRICA

What are you Breeding?

How Do u breed

“You can’t manage what you don’t measure.”

“Om te weeg is om te weet”

Main need in recording
–Individual ID’s



**Agriculture &
Rural Development**
Department:
Agriculture and Rural Development
North West Provincial Government
REPUBLIC OF SOUTH AFRICA

Why Breed?



- To ensure continuous improvement of animals
- Know the trait you will like to improve (main objective)

Trait	Descr	%
Scro circum	Med/h	20-50
Birth weight	Med	35-45
Cow weight	High	50-70
Pigmentatio	High	45-60
Tempo	Med/h	25-50



How to Breed?



- Inbreeding
- Outbreeding
- Crossbreeding
- Controlled breeding method
- ☐ to suit management objectives
- Enhance accurate record keeping
- ☐ Efficient use of labour
- ☐ Involves additional costs (provision of extra feed & drugs)
- Non controlled breeding does not aid in improving performance





**Agriculture &
Rural Development**
Department:
Agriculture and Rural Development
North West Provincial Government
REPUBLIC OF SOUTH AFRICA

LOT 10

0480068, MNR M. VAN NIEKERK, POSBUS 110259, HADISON PARK, 8306

Name	Ident. number	Reg. number	Section	Birth Date
GANNA	MVN 020056	0046836250	SP	06/10/02
02 56	Female			

Sire: SINRAD JS 1993 257 - 24/06/93
JS 930257 0028422319

P.G. Sire: BARTLOWCOMBINE ZL P 346 - 15/10/84
ZL 840346 0014402002

P.G. Dam: SINRAD JS 1989 54 - 20/11/89
JS 890054 0020471132
Avg. ICP: 363 (12) AFC: *

M.G. Sire: D.O.A. DOAL 1988 1106 - 30/09/88
DOAL881106 0017547878

Dam: TAFELSIG VARA CS 95 27 - 08/08/95
CS 950027 0034100792

Calving: 06/98 09/99 09/00 10/01 10/02 10/03 10/04 10/05
11/06 10/07
Avg. ICP: 380 (10) AFC: 33

M.G. Dam: BARTLOWCOMBINE ZL 1983 134 - 17/11/83
ZL 830134 0011183886
Avg. ICP: 374 (20) AFC: 24

	Birth	Wean (205)	12M	18M	ADG	ADA	F/E	SC	L/H	Phase
Performance		159	181							B11
Indices		94	96							
Contemporaries		48	38							
Breeding values - direct	0.28 (65)	4.0 (73)	0.5 (75)	1.7 (64)	-10 (64)					
Breeding values - maternal	-0.73 (65)	-7.6 (74)	09/2009							

Calving: 12/04 11/05 11/06 11/07 10/08 10/09

Avg ICP: 349 (6)AFC: 26

Inoculations:

Tests done:

Breeder's Remarks: 6 maande dragtig van MVN 03-102. Top 10% vir speen direk.

Breeding values - 09/2009			
FCR	0	Civ Temp	0
KR	0	Mat Wgt	8.0 (64)
SC	0.20 (64)	Feed Prof	0
Length	-1 (64)	Height	5 (64)



**Agriculture &
Rural Development**

Department:
Agriculture and Rural Development
North West Provincial Government
REPUBLIC OF SOUTH AFRICA

Parameter to be improved with controlled breeding



Calving status	12 month weight
Birth mass/weight Within 3 days of birth	
Dam and sire ID's	
Weaning mass	
ICP	





KE A LEBOGA! PULA!!!!



**Agriculture &
Rural Development**
Department:
Agriculture and Rural Development
North West Provincial Government
REPUBLIC OF SOUTH AFRICA