

**NORTH WEST DEPARTMENT OF AGRICULTURE AND
RURAL DEVELOPMENT
AGRICULTURAL SUPPORT SERVICES**

YIELD POTENTIAL

Mr M.P Mdaka

MMdaka@nwpg.gov.za

082 458 1506



**Agriculture &
Rural Development**
Department:
Agriculture and Rural Development
North West Provincial Government
REPUBLIC OF SOUTH AFRICA



SOIL POTENTIAL

DETERMINANT BY
SOIL(PHYSICAL AND CHEMICAL),
CLIMATE (RAINFALL AND
TEMPERATURE)
PLANT(CROPS, VEGES AND PASTURE)



MISPAH

MISPAH FORM — Ms



ORTHIC A

HARD ROCK

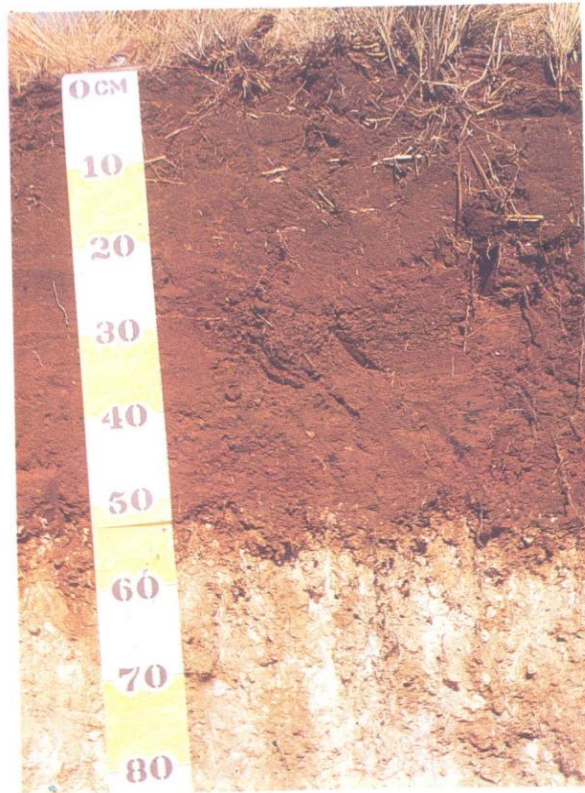


**Agriculture &
Rural Development**

Department:
Agriculture and Rural Development
North West Provincial Government
REPUBLIC OF SOUTH AFRICA

MOLOPO AND AVALON

MOLOPO FORM — Mp



ORTHIC A
YELLOW-BROWN APEDAL B
SOFT CARBONATE HORIZON



122



**Agriculture &
Rural Development**

Department:
Agriculture and Rural Development
North West Provincial Government
REPUBLIC OF SOUTH AFRICA

HUTTON

HUTTON FORM — Hu

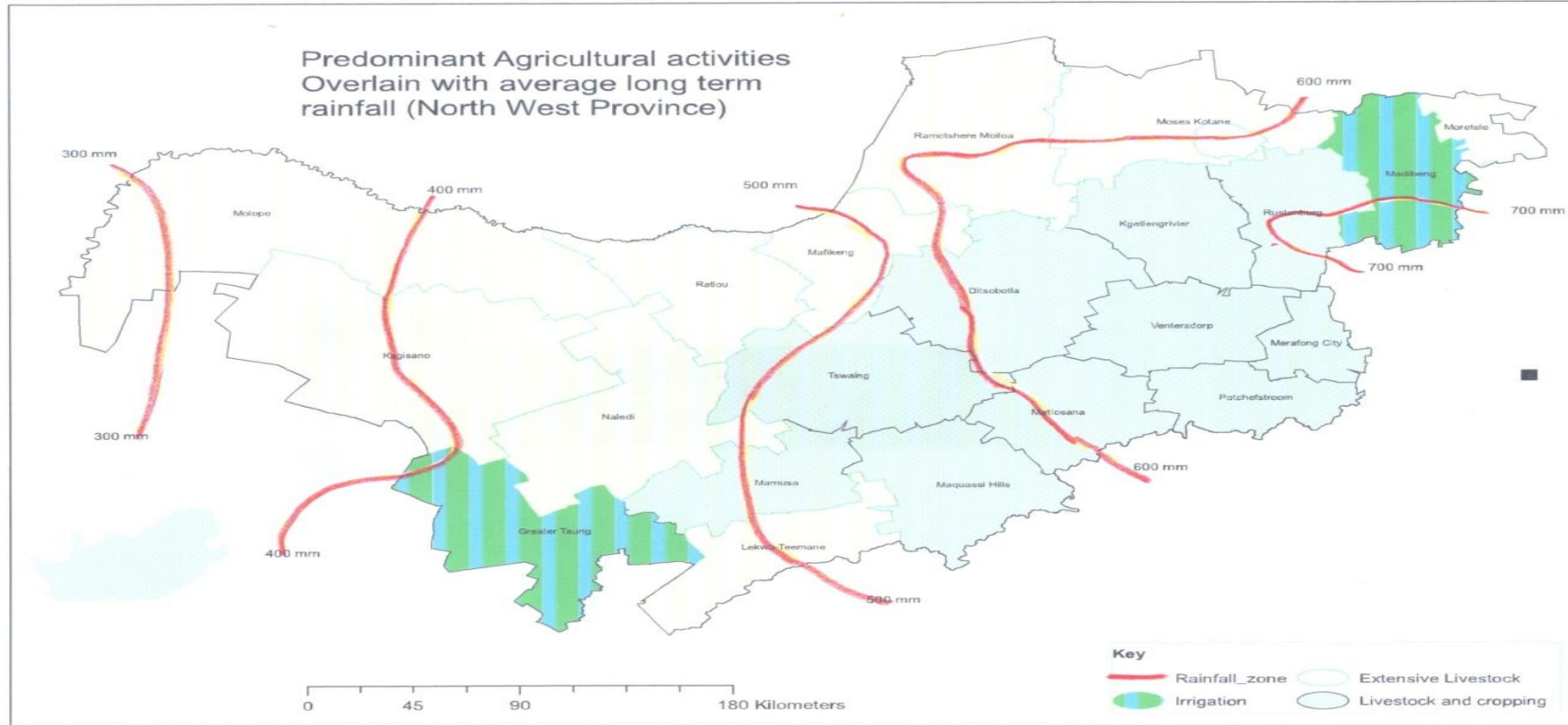


ORTHIC A

RED APEDAL
B



Rainfall Distribution



Yield Estimation (kg/ha)

CROP937	ANNUAL RAINFALL (mm)	TEXTURE OF HORIZON TO EFFECTIVE DEPTH	SOIL DEPTH (mm)								
			400	500	600	700	800	900	1000	1100	1200
MAIZE	500	Sand	858	1072	1287	1501	1715	1931	2111	2111	2111
		SaLm/LmSa	1408	1759	2111	2462	2639	2639	2639	2639	2639
		SaClLm	1373	1715	2059	2111	2111	2111	2111	2111	2111
		SaCl	1501	1847	1847	1847	1847	1847	1847	1847	1847
		Cl	1583	1583	1583	1583	1583	1583	1583	1583	1583
GROUNDNUTS	500	Sand			952	1012	1070	1070	1070	1070	1070
		SaLm/LmSa			952	1012	1070	1070	1070	1070	1070
		SaClLm									
		SaCl									
		Cl									
SUNFLOWER	500	Sand	516	644	657	767	876	971	971	971	971
		SaLm/LmSa	796	846	1015	1142	1142	1142	1142	1142	1142
		SaClLm	742	928	1028	1028	1028	1028	1028	1028	1028
		SaCl	846	937	937	937	937	937	937	937	937
		Cl	504	504	504	504	504	504	504	504	504



CROP	ANNUAL RAINFALL (mm)	TEXTURE OF HORIZON TO EFFECTIVE DEPTH	SOIL DEPTH (mm)								
			400	500	600	700	800	900	1000	1100	1200
WHEAT	500	Sand	1086	1180	1274	1640	1640	1640	1640	1640	1640
		SaLm/LmSa	1086	1180	1274	1640	1640	1640	1640	1640	1640
		SaClLm									
		SaCl									
		Cl									
GRAINSORGHUM	500	Sand	1225	1530	1837	2143	2449	2755	3062	3367	3465
		SaLm/LmSa	1890	2363	2836	3309	3782	4077	4077	4077	4077
		SaClLm	2074	2594	3112	3630	3669	3669	3669	3669	3669
		SaCl	2362	2954	3343	3343	3343	3343	3343	3343	3343
		Cl	2882	3057	3057	3057	3057	3057	3057	3057	3057



Thank you

Relaboga

Contact -

082 458 1506

MMdaka@nwpg.gov.za