



Selection of Bucks & Does
Khomotso Kgaswane
Scientific Production Technician
Rabokala
17 August 2022



**Agriculture &
Rural Development**
Department:
Agriculture and Rural Development
North West Provincial Government
REPUBLIC OF SOUTH AFRICA



WHAT IS SELECTION?

- Method to improve the flock genetically

Helps in deciding which animals will be parents

The aim is to increase / improve the desired genes not to produce new genes

Identify the traits of greatest economic importance

The more traits involved in selection, the less improvement will result for a single trait

Select superior animals from the flock and cull inferior



Should be done at wean and before mating.

Cull the non pregnant ewes, the ones with poor mothering ability, the ones with udder deficiency.

Depends on the condition, marketing could be done at this stage.

Selection of the proper type is only the beginning .

Proper health and nutrition play a major role in the growth and development of your goat.

But: With selection you will reach your goal.

Records are very helpful during selection



Why & When?

TO IMPROVE.....

- Fertility
- Reproduction
- Growth
- Adaptation
- Meat

- At Wean:
 - Kids
 - Does

- Before mating:
 - Replacement Does
 - Mature Does



THE BUCK

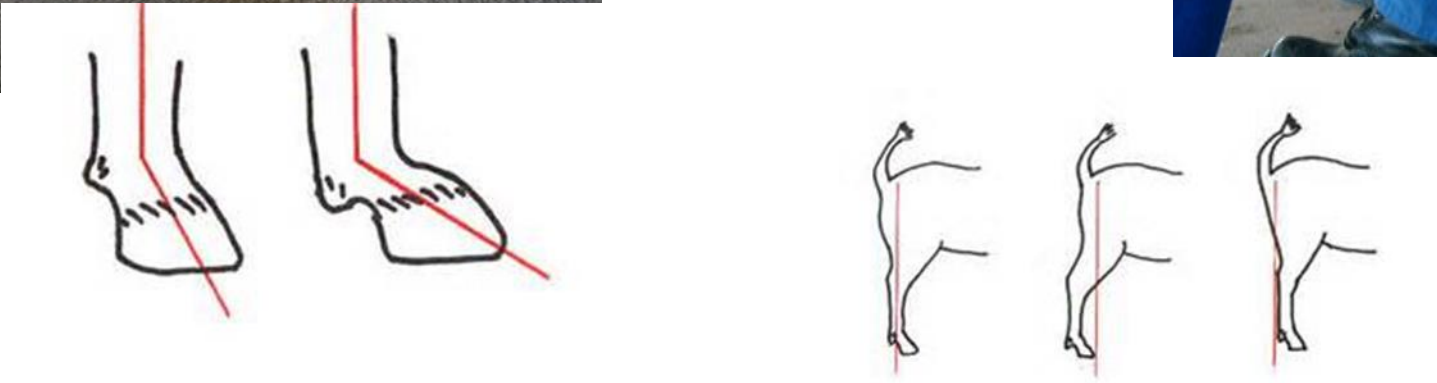


**The legs should be straight
and set squarely under the
corner on the body.
The buck must have
presence**





Pastern must be away from the ground to avoid injuries



UNWANTED WHEELS



The engine and paddels



1. One of the important factor when evaluating ram's breeding potential is testicles size.
2. Testicles should be firm when palpated and of equal size.
3. There is correlation between testicles size and semen quality.
4. Scrotum circumference should be 35cm at the age of 15-months of age.

The bigger the better







**Agriculture &
Rural Development**
Department:
Agriculture and Rural Development
North West Provincial Government
REPUBLIC OF SOUTH AFRICA

Remember to buy a buck for the does

THE DOE





**Agriculture &
Rural Development**

Department:
Agriculture and Rural Development
North West Provincial Government
REPUBLIC OF SOUTH AFRICA

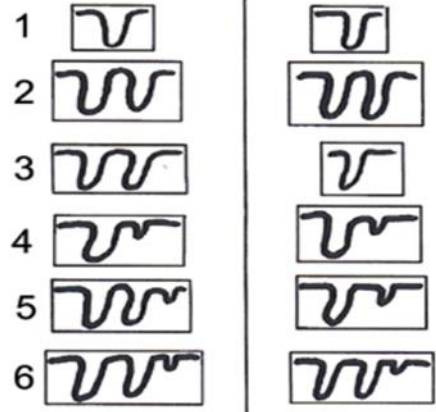


• I





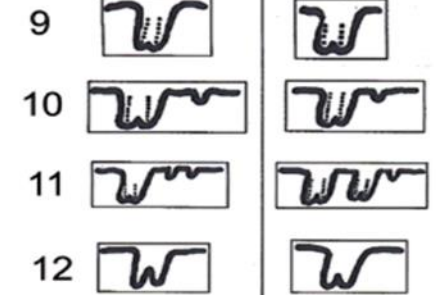
Speen tipes - Teat types



Speen tipes - Teat types



Speen tipes - Teat types



Kategorieë / Categories

Ideal / Ideaal

Acceptable / Aanvaarbaar

Acceptable / Aanvaarbaar

Acceptable / Aanvaarbaar

Acceptable / Aanvaarbaar

Acceptable / Aanvaarbaar

Kategorieë / Categories

Acceptable only for commercial goats / Aanvaarbaar slegs vir kudde bokke.

Acceptable for Stud & Commercial goats / Aanvaarbaar vir Stoet en Kudde bokke.

Kategorieë / Categories

Aanvaarbaar vir kudde bokke indien funksioneel doeltreffend

Acceptable for commercial goats only if functional effective.





Figure 6-6. Goat doe with bad udder structure.



10. Doe with bottle teats.



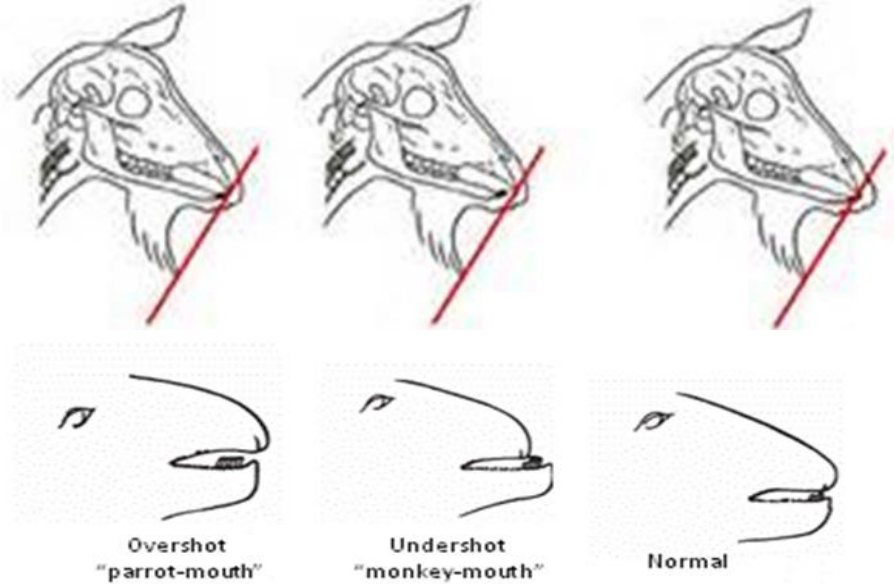
**Agriculture &
Rural Development**

Department:
Agriculture and Rural Development
North West Provincial Government
REPUBLIC OF SOUTH AFRICA

The mouth



- I

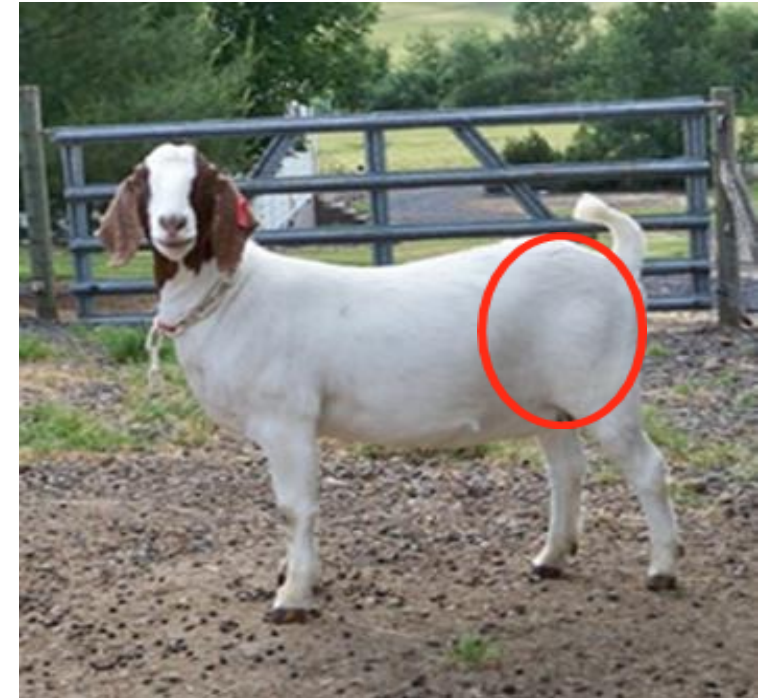


Meat - Muscling

Muscling (Growth and expression)

- The shape of the loin and size of the forearm.
- Should be broad, thick back and loin – firm and hard.

• I



Usually a goat that walks and stands wide have heavier muscle



Body Conformation:

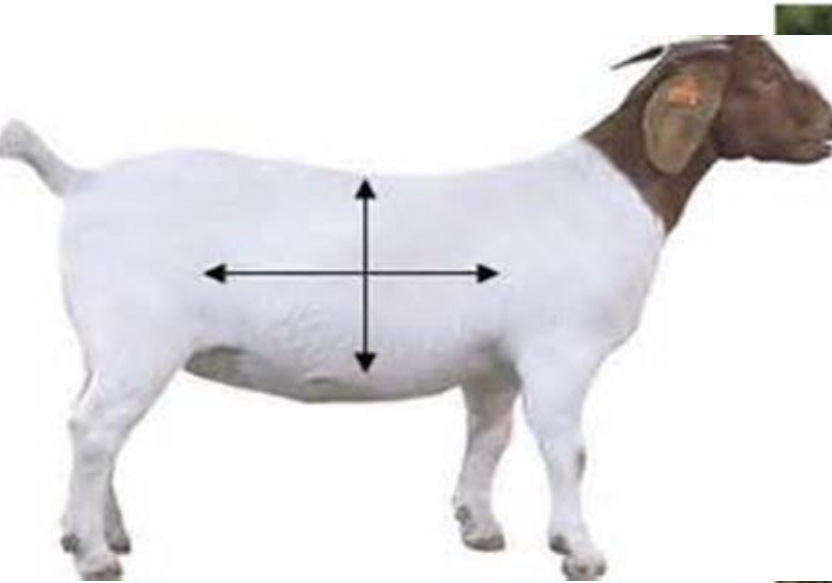
Rectangle in appearance from the side.

Straight level top and bottom line

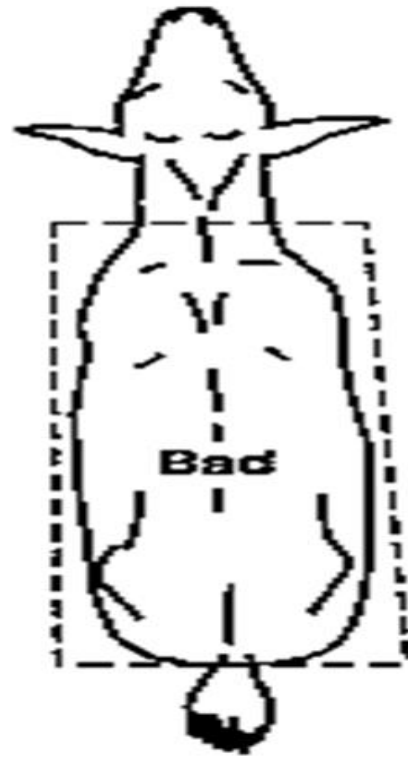
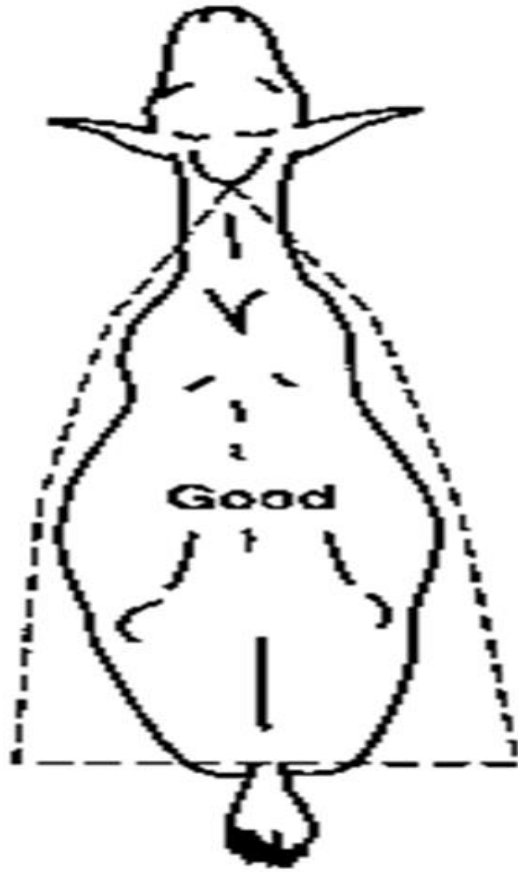
Relationship of body length to body depth = to volume and capacity.

Should be long bodied with adequate depth and spring of rib.

Avoid short-, shallow bodied, narrow based or flat ribbed



BODY TYPES



**Agriculture &
Rural Development**

Department:
Agriculture and Rural Development
North West Provincial Government
REPUBLIC OF SOUTH AFRICA



Is she done?

A o feditse?



**Agriculture &
Rural Development**

Department:
Agriculture and Rural Development
North West Provincial Government
REPUBLIC OF SOUTH AFRICA

LETS NOT GET DISCOURAGED

