

**NORTH WEST DEPARTMENT OF AGRICULTURE AND
RURAL DEVELOPMENT.
AGRICULTURAL SUPPORT SERVICES.**



**HEIFER'S SELECTION
10 November 2021
Sterkstroom (Mr T Taje)**

**KHOMOTSO KGASWANE
ANIMAL SCIENCE DIVISION**

018299-6798/072 266 4347

smashala@nwpg.gov.za



**Agriculture &
Rural Development**
Department:
Agriculture and Rural Development
North West Provincial Government
REPUBLIC OF SOUTH AFRICA



Selection of heifers



- Select heifers that calve easily without assistance & that show good maternal characteristics.
- Heifers are shy breeders; they should be separated from mature cows.
- Avoid over fat heifers because they have calving problems.
- Select heifers according to their dam's records (no. of calves. ICP & weaning index).
- Know your cows or herd needs and your objective



The body



- Does he look like a cow?
- Does it show teats
- Volume and depth
- Height and width



BREEDING

Avoid heifers that will have difficulty calving

The rump must be sloopy
Have a feminine face



The wheels



Correct



Too straight



Sickle-hocked



Normal



Knock-kneed



Bow-legged



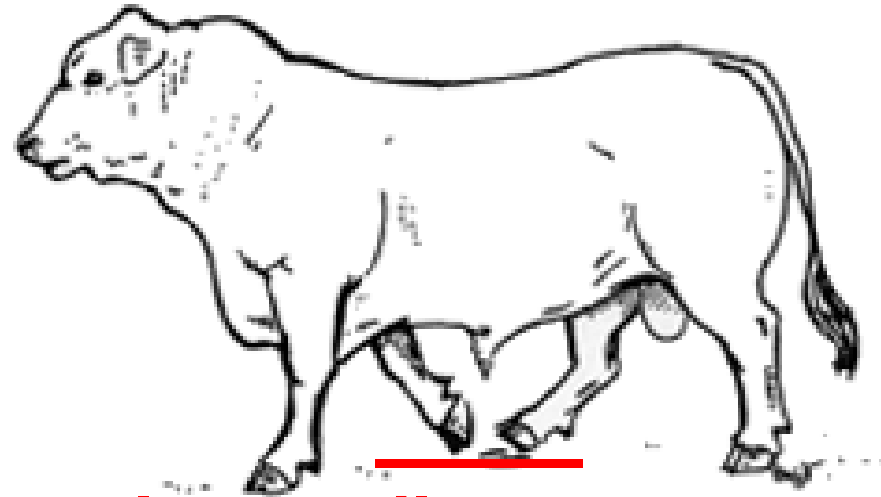
Correct



Bow-legged



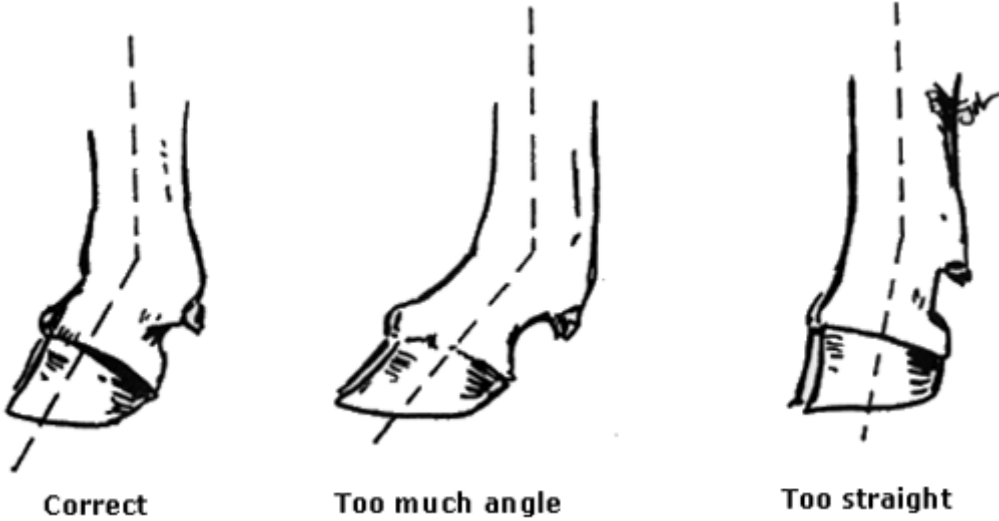
Cow-hocked



Tlhako ya morago e gata fa ya pele e gatileng teng.



The wheels



- **Avoid heifers with weak pasterns, over grown hooves, straight hocks**





**Agriculture &
Rural Development**

Department:
Agriculture and Rural Development
North West Provincial Government
REPUBLIC OF SOUTH AFRICA



KE A LEBOGA! PULA!!!!

